

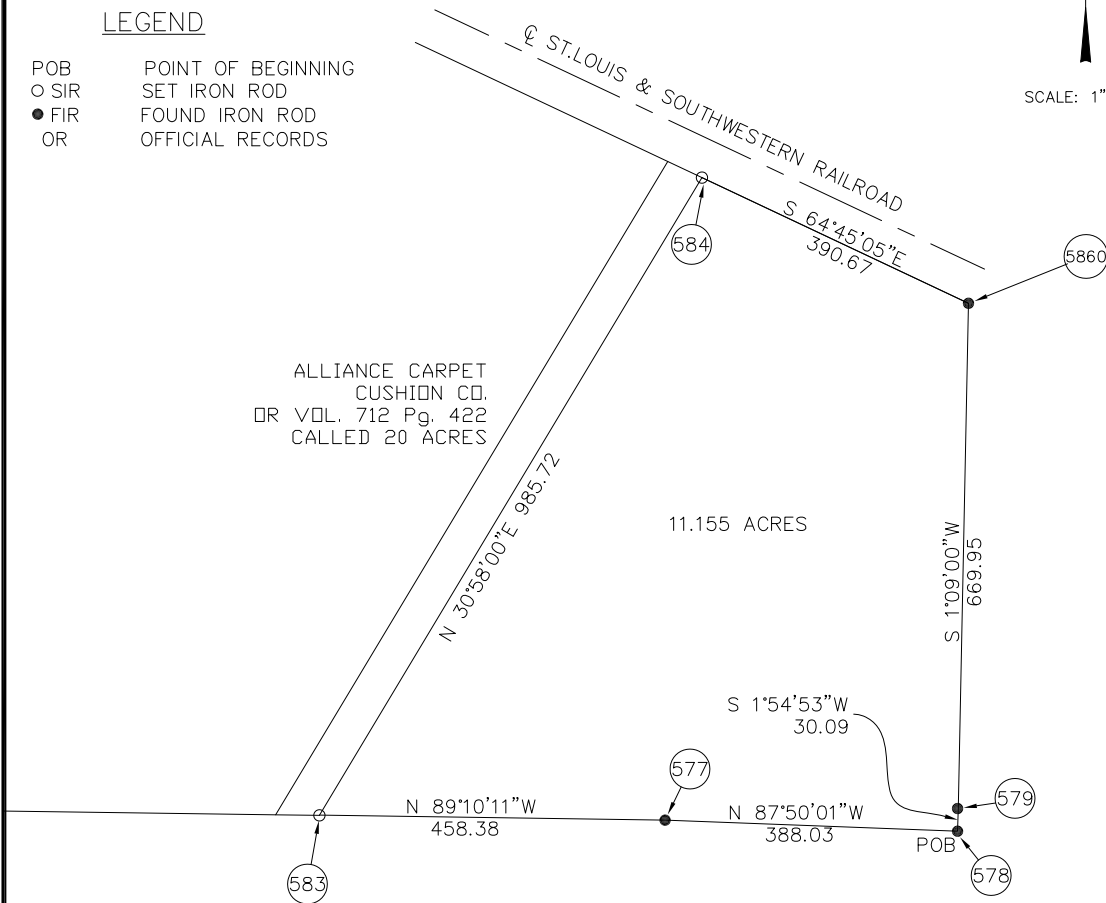
SAMUEL SWARTOUT SURVEY ABSTRACT 1022



SCALE: 1"=200'

LEGEND

- POB POINT OF BEGINNING
- SIR SET IRON ROD
- FIR FOUND IRON ROD
- OR OFFICIAL RECORDS



COORDINATE LIST			
PT#	NORTHING	EASTING	DESCRIPTION
587	4938.0148	5790.6278	SE CORNER 11.155 ACRE TRACT
577	4952.6831	5402.8720	INTERIOR CORNER 11.155 ACRE TRACT
583	4959.3245	4944.5383	SW CORNER 11.155 ACRE TRACT
584	5804.5469	5451.7302	NW CORNER 11.155 ACRE TRACT
586	5637.9369	5805.0944	NE CORNER 11.155 ACRE TRACT
579	4968.0922	5791.6333	INTERIOR CORNER 11.155 ACRE TRACT

**COMMERCE INDUSTRIAL
DEVELOPMENT ASSOCIATION
11.155 ACRES
HUNT COUNTY, TEXAS
FEBRUARY 2004**

I, KENNETH RAY JONES, REGISTERED PROFESSIONAL LAND SURVEYOR FOR THE STATE OF TEXAS, RPLS #3332, DO HEREBY CERTIFY THAT THE PLAT SHOWN HEREIN REPRESENTS AN ACTUAL ON-THE-GROUND SURVEY CONDUCTED BY MYSELF. THIS SURVEY SUBSTANTIALLY COMPLIES WITH THE CURRENT TEXAS SOCIETY OF PROFESSIONAL SURVEYORS STANDARDS AND SPECIFICATIONS FOR A CATEGORY 1A, CONDITION II SURVEY.

THIS PDF FILE IS AN
ELECTRONIC VERSION OF
THE ORIGINAL SIGNED AND
SEALED PLAT AND
SHOULD NOT BE
RECORDED OR FILED
WHAT SO EVER. A SIGNED
AND SEALED ORIGINAL
MAY BE OBTAINED FROM
HAYTER ENGINEERING INC.
BY CALLING (903)
785-0303.

